



Mobile Mapper

Road Science offers the innovative method of high-speed surveying using a vehicle mounted Mobile Mapper. The service utilises the only unit of its kind within New Zealand and enables the delivery of results in a faster and safer way.

Benefits:

- **Safety** - surveying with the Mobile Mapper is undertaken without putting people in live traffic lanes or disrupting traffic.
- **Cost savings** - compared to traditional surveying on large programs of work.
- **Wealth of datasets and deliverables** - the Road Science experts can deliver a multitude of reports depending on your needs.

Applications:

- Transportation
- Urban Design
- Town Planning
- Asset Management
- Rail
- Maritime

For more information please contact:

Graham Watson - graham.watson@roadscience.co.nz
021 972 026

roadscience.co.nz 0800 180 200

Habitat



Rural



Motorway



Residential

Road Science
Leading transport technology

Pegasus Two:

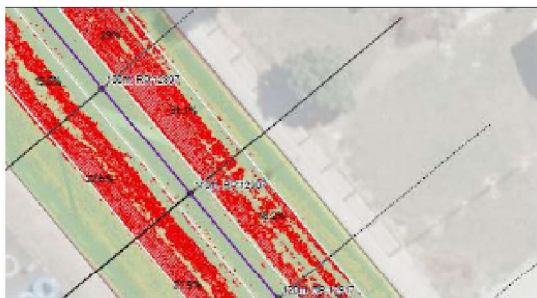
Combining a laser scanning sensor, multiple cameras and an Inertial Measurement Unit (IMU), the P2U captures data with a laser scanner collecting 1,000,000 points per second. Imagery is recorded with six cameras to give a complete 360° view of the road and surrounds, calibrated to the Li DAR profiler data. Two additional cameras are used for targeted pavement analysis, rutting, flushing, crack detection and roughness.

Deliverables:

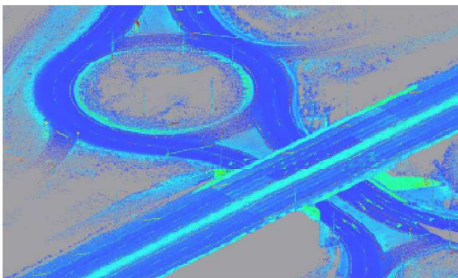
- Point clouds
- 2D and 3D topographical surveys (Autocad, 12d, Microstation)
- Asset management and attribute information (ArcGIS, RAMM)
- Road condition assessment



Analysis using pavement cameras



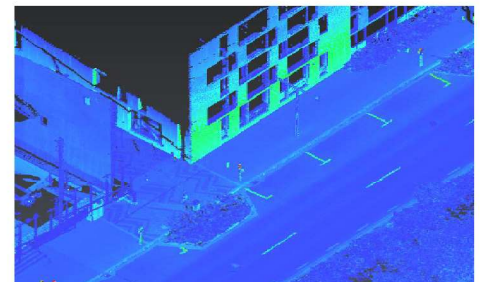
Extraction of topographical data



360 degree imagery



Point cloud D



Intensity

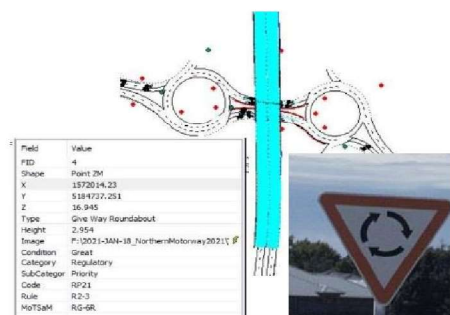


RGB



Classified

GIS attribute extraction



4 side cameras

